

Dear Voter,

Some voters in the Central Fire District of Santa Cruz County received a ballot that was missing Measure R. A map of the affected area is below.

Each address in the Central Fire District is assigned to the District and to a Division. After reviewing the addresses in the district, it was determined that 124 addresses (with 284 registered voters), were assigned only to the Division and not the District, resulting in Measure R not appearing on their ballot.

A new ballot and a letter were sent to the voters affected so they could vote for all the contests they are entitled to.

The Elections Department has this process in place for these voters:

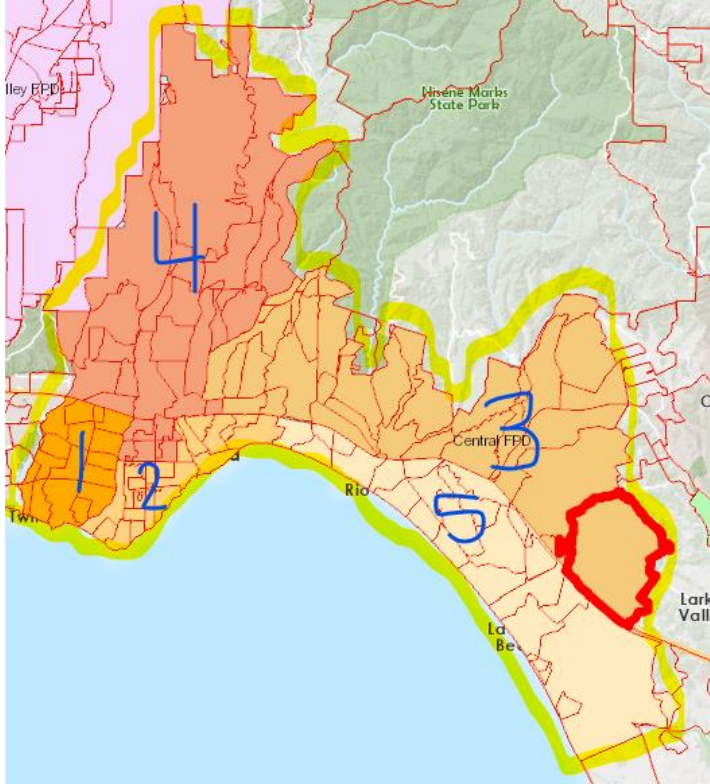
1. The ballot envelope for these voters has been voided, so when the envelope is returned, it is routed to a team to review.
2. The team determines if the original or the replacement ballot is inside.
3. If it is the replacement ballot, it is prepared for tally.
4. If it is the original ballot, the team contacts the voter to see about the status of the replacement ballot.
5. If a voter returns only the original ballot and never the replacement ballot, and the team does not hear from the voter, the original ballot will be counted.

The ballot envelope being voided is to ensure that it is segregated to be handled differently to allow for the option of the replacement ballot to be cast.

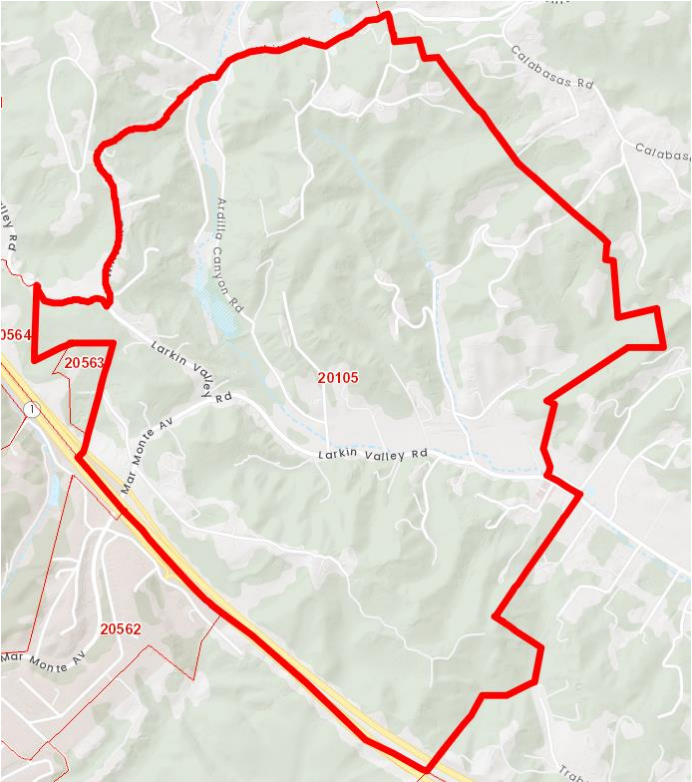
For voters who have not yet returned their ballot, we recommend that they vote the replacement that was mailed on October 12.

If you have any questions, please contact Tricia Webber at 831-454-2060 or tricia.webber@santacruzcountyca.gov

We apologize for any inconvenience this may have caused.



Central Fire District of Santa Cruz County (district highlighted in yellow with the affected area bordered in red and the divisions numbered in blue)



Close up of the area receiving a replacement ballot